

# COVID-19 POLL

## Indians trust in State and Central Government rises

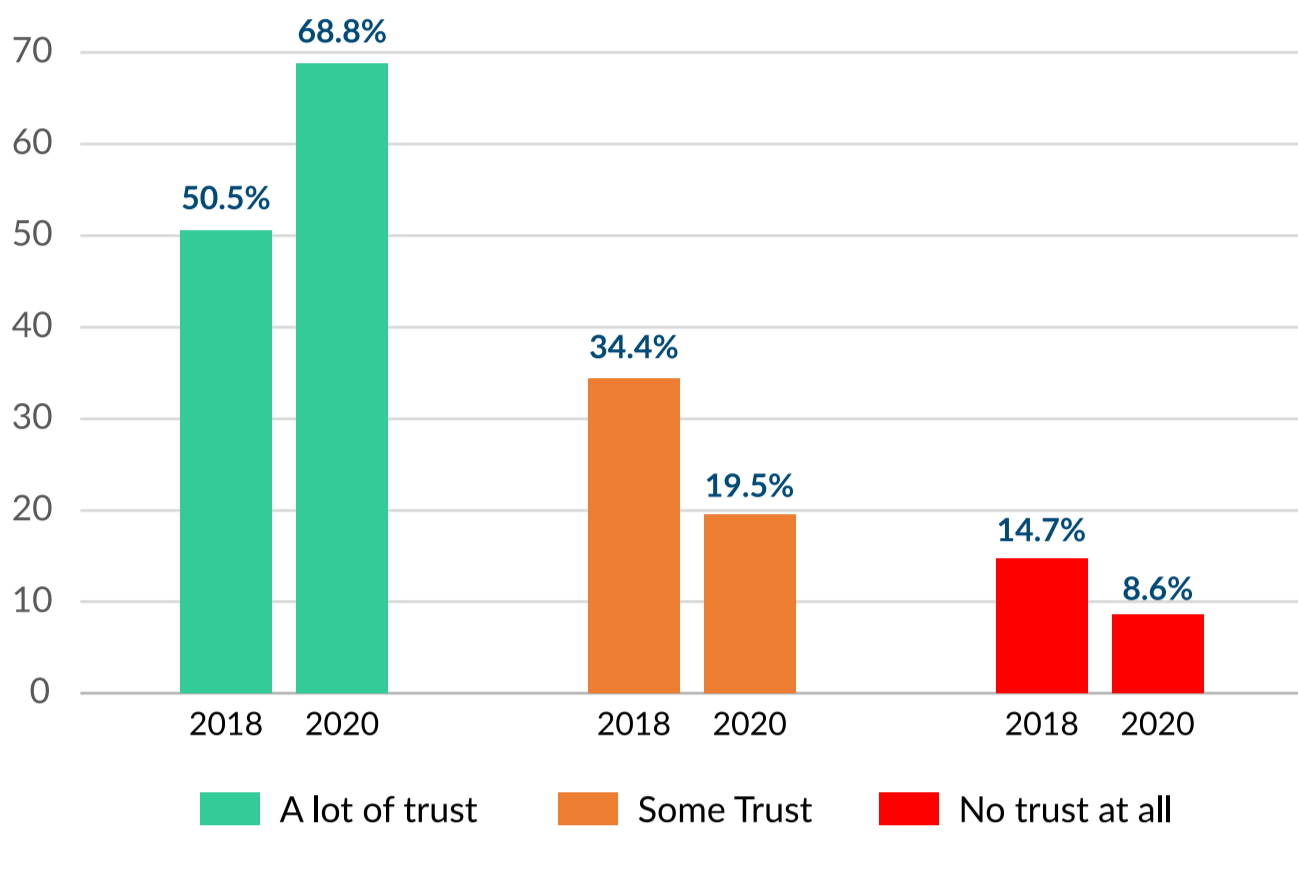
Team CVoter conducted a series of surveys to find out the level of trust Indians placed in the Central and State government. In 2020, as compared to 2018, the trust Indians place in both the Central and State government has increased by 18.3%.

Team Polstrat breaks down this increase in trust in the government across demographics in India.

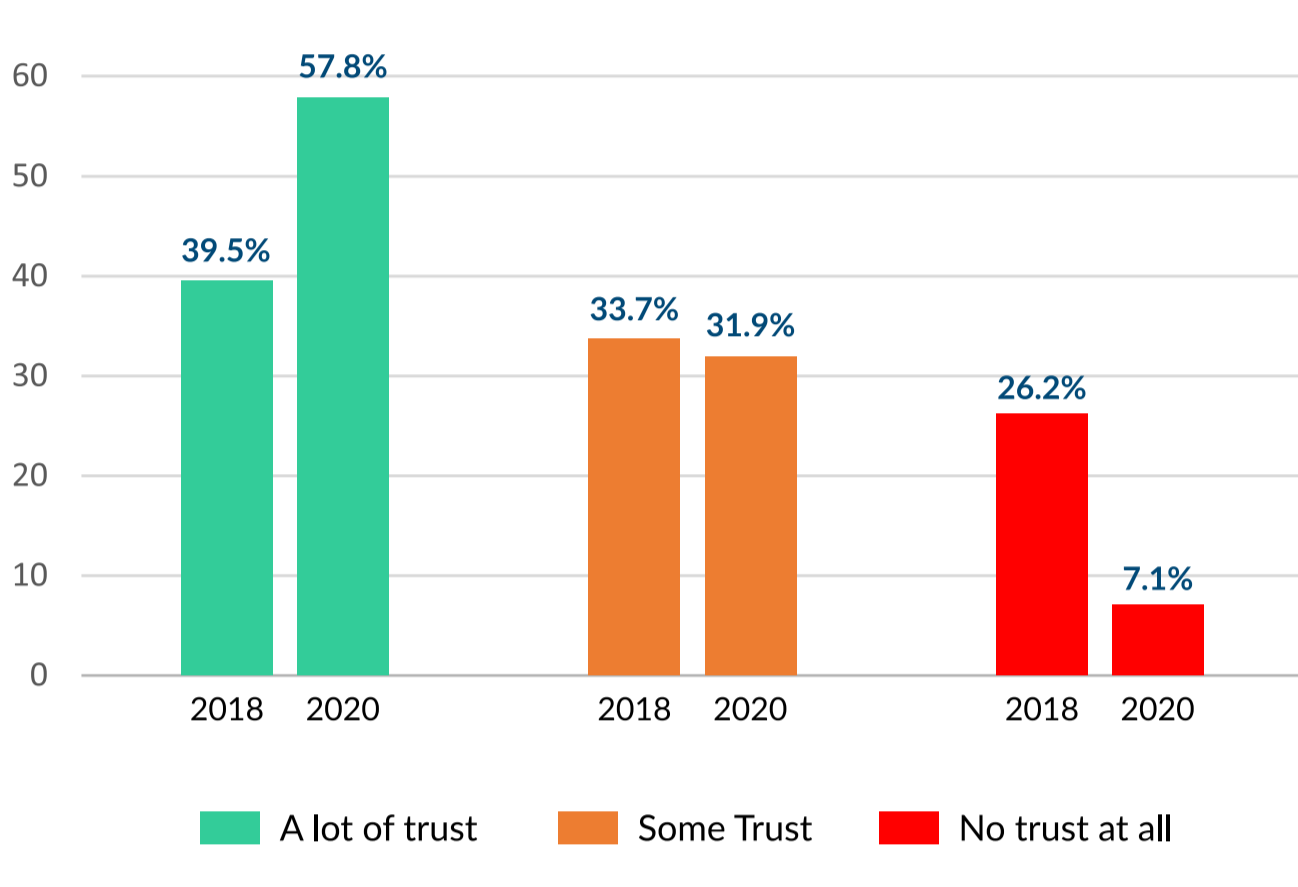


**Q** How much do you trust the following institutions? Do you have; a lot of trust, some trust or no trust at all in Central/State Government?

### Central Government

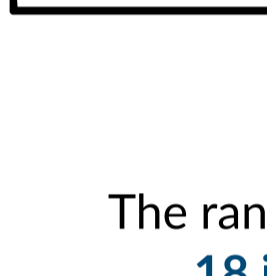


### State Government



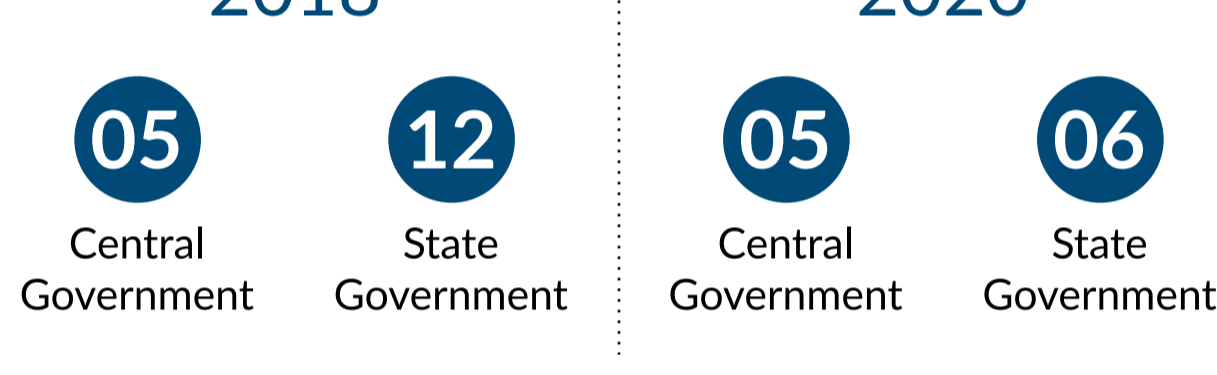
## Main Takeaways

**2020** Indians registered an **18.3% increase in trust** in both the State and Central Government.



The Central Government is deemed more trustworthy, with **68.8%** respondents stating that they had "a lot of trust" in it

The rank of the Central Government amongst all 18 institutions remained the same while the rank of the State Government increased tremendously to 6 in 2020.



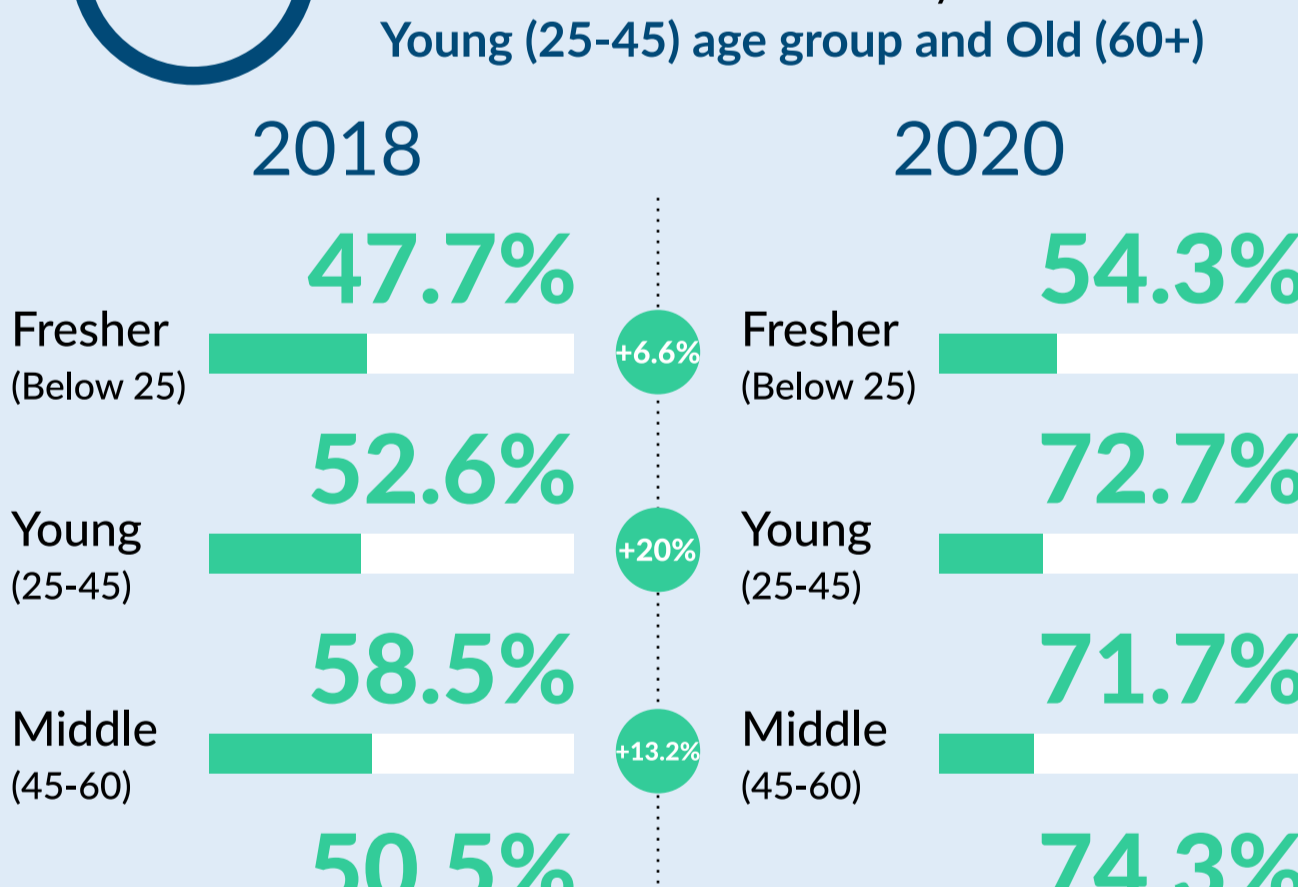
## Breaking Down 2020 Data

### Central Government

All demographics, across, age, gender, social, income and education groups recorded an increase in trust in the Central Government.



Across age-groups, trust in the Central Government increased. However, highest increases were recorded by those in the Young (25-45) age group and Old (60+)



All social groups recorded an increase in trust in the Central Government, with highest increase recorded by Christians, Upper-Class Hindus and Scheduled Caste (SC)

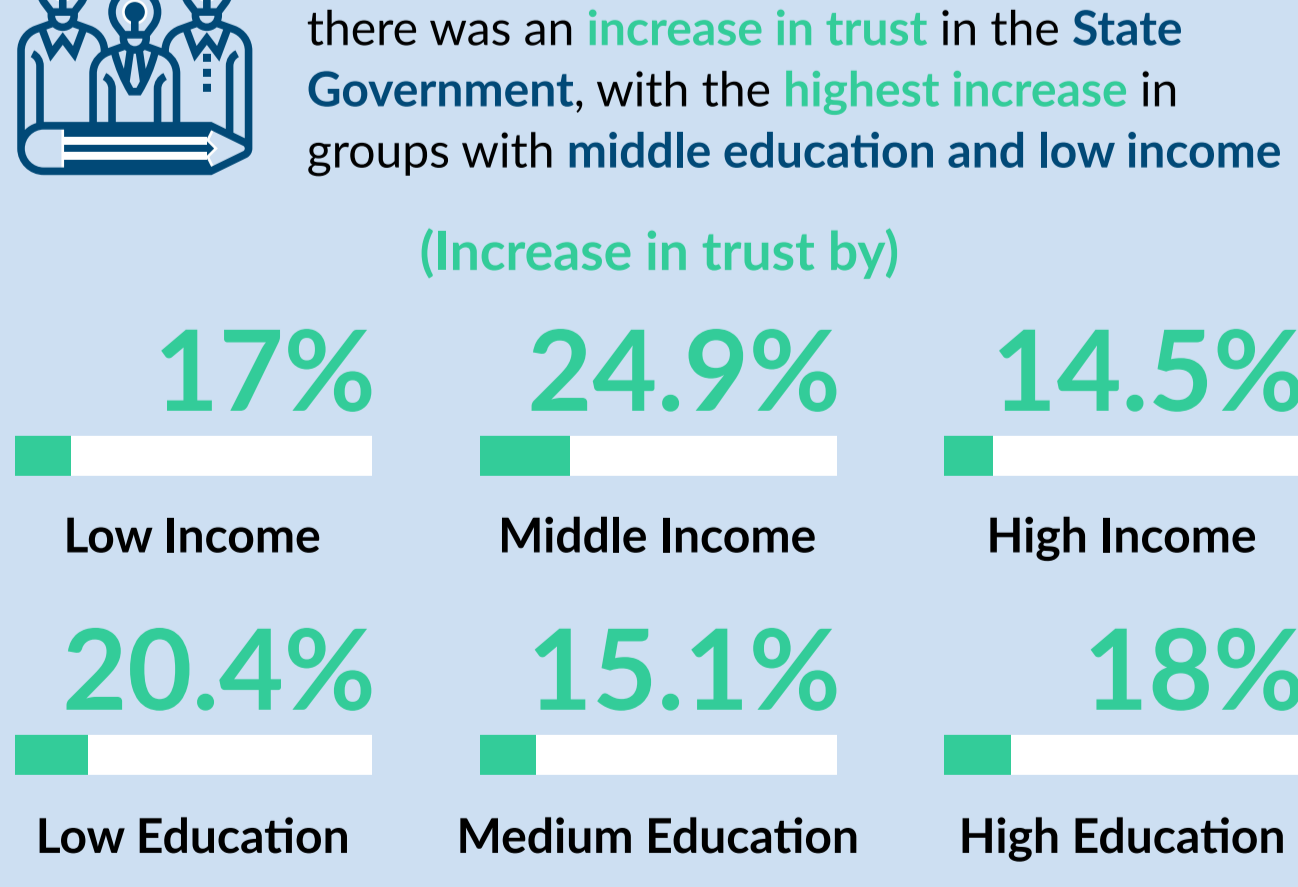


### State Government

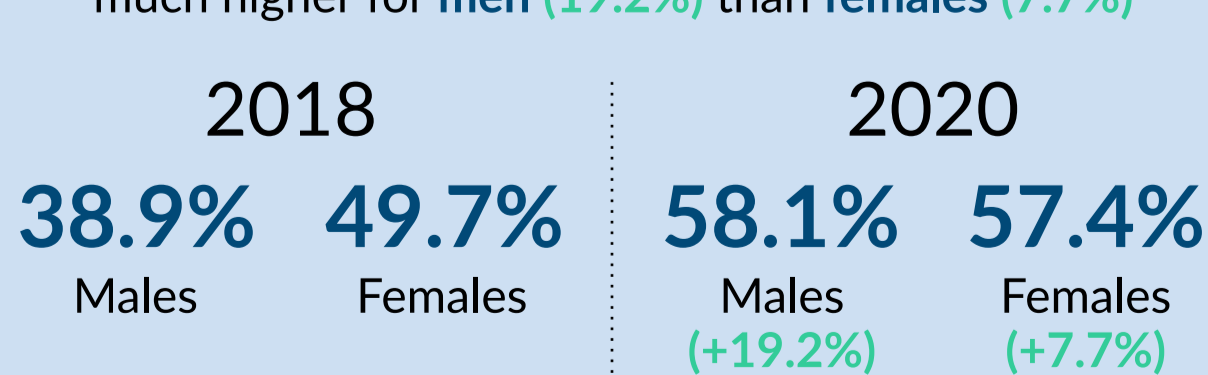
All demographics, across, age, gender, social, income and education groups recorded an increase in trust in the State Government.



Across income groups and education groups, there was an increase in trust in the State Government, with the highest increase in groups with middle education and low income



Both males and females recorded increased trust in the State Government, however, the percentage increase was much higher for men (19.2%) than females (7.7%)



All survey findings and projections are based on the Team CVoter "Trust in Institutions" survey carried out in 2010, 2018 and 2020 among 18+ adults statewide, including every major demographic.

The data is weighted to the known demographic profile of every state, including age group, social group, income, region, gender and education levels.

	2018	2020	Total
SAMPLE SIZE:	2,709	1,347	4,056



SPRF | Social Media Partner

For more information, visit polstrat.com | teamcvoter.com